

A dynamic splash of clear water is captured in mid-air, with numerous droplets and a main wave of water moving from left to right. The background is a light blue gradient. A vertical red bar is visible on the far left edge of the image.

Refurbishment and Upgrade

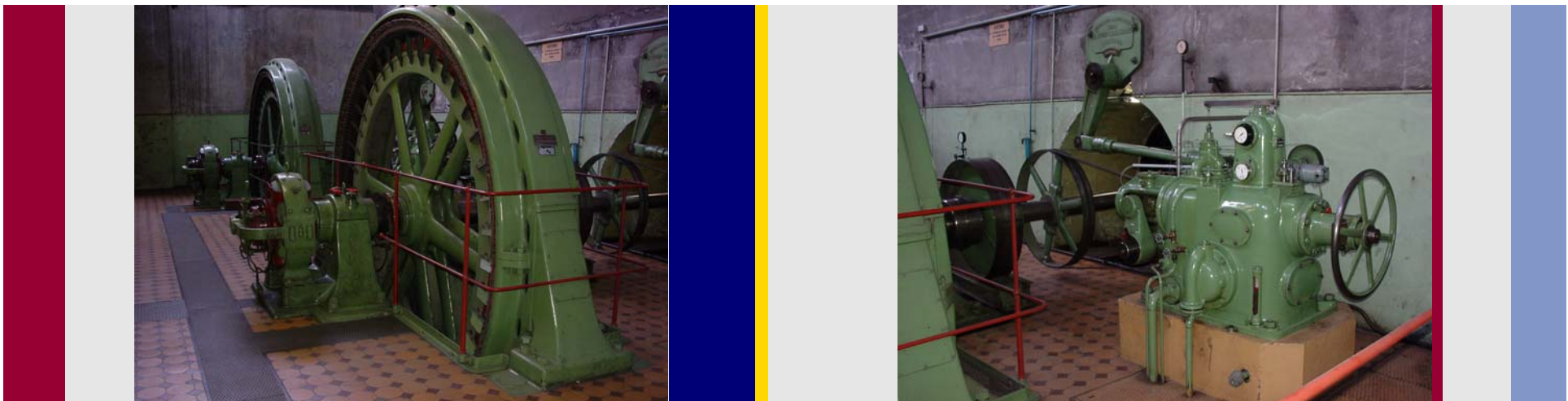
FELDKIRCH

SCOPE OF SUPPLY:

New runners
New turbine shafts
Hydraulic power pack
Erection

MAIN DATA:

Type: Francis twin turbine
Output: 600 kW
Head: 7.5 m
Speed: 150 min⁻¹
Year: 2008
Country: Austria



TIRINO Medio und Inferiore

SCOPE OF SUPPLY:

Kaplan turbine
Francis spiral case turbine
Hydraulic governor
TES Generator
Balance of plant
Installation and commissioning

MAIN DATA:

Type: 1 Kaplan turbine
1 Francis spiral case turbine
Output: 1205 kW / 1473 kW
Head: 22.40 m / 60.31 m
Speed: 500 min⁻¹ / 750 min⁻¹
Year: 2007
Country: Italy



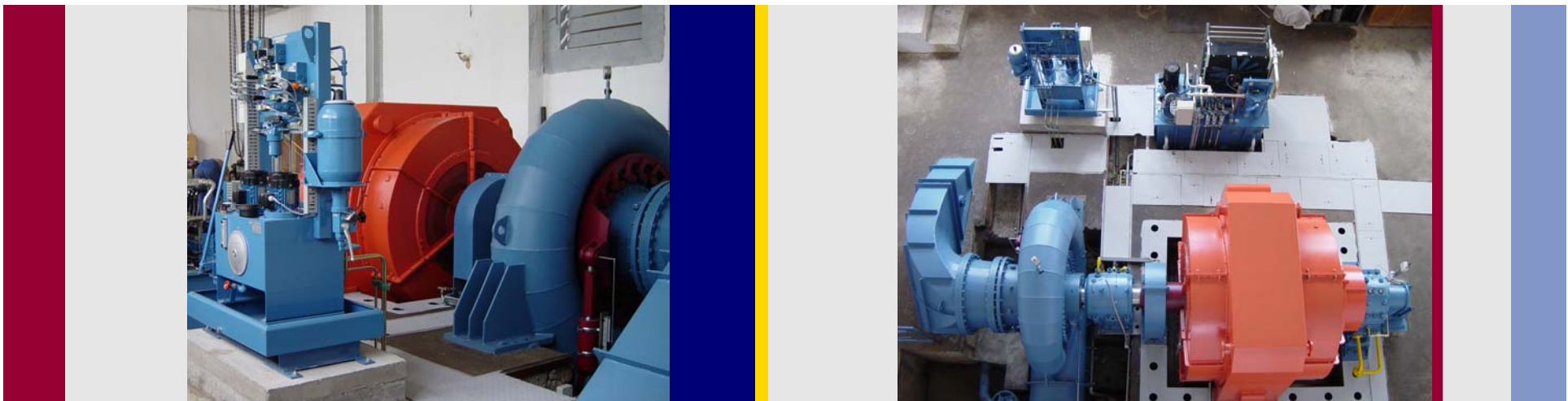
GJANC

SCOPE OF SUPPLY:

Refurbishment of turbine and generator
Supply and commissioning of excitation system and automation

MAIN DATA:

Type: Francis spiral case turbine
Output: 3075 kW
Head: 127 m
Speed: 1000 min⁻¹
Year: 2005
Country: Albania



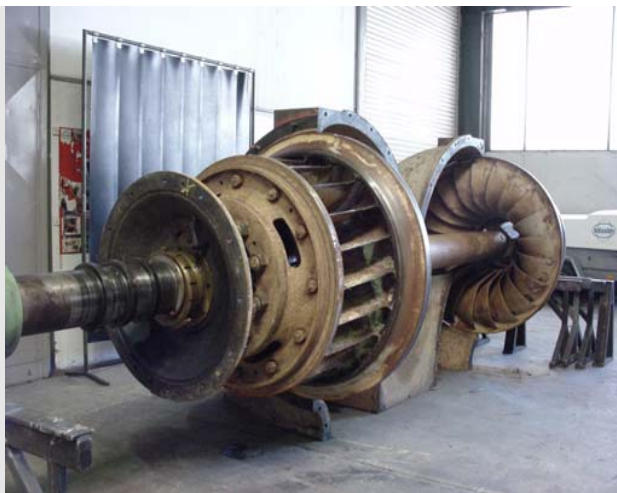
ROTHEAU

SCOPE OF SUPPLY:

New turbine shaft
Runner repair works
Reparation of wicket gate
Erection

MAIN DATA:

Type: Francis twin turbine
Output: 509 kW
Head: 6.5 m
Speed: 125 min⁻¹
Year: 2004
Country: Austria



PFERTNER

SCOPE OF SUPPLY:

Refurbishment
Hydraulic governor
Load optimisation
Electrical equipment
Erection and commissioning

MAIN DATA:

Type: Francis flume turbine
Output: 7.5 kW
Head: 2.7 m
Speed: 210/1000 min⁻¹
Year: 1999
Country: Austria



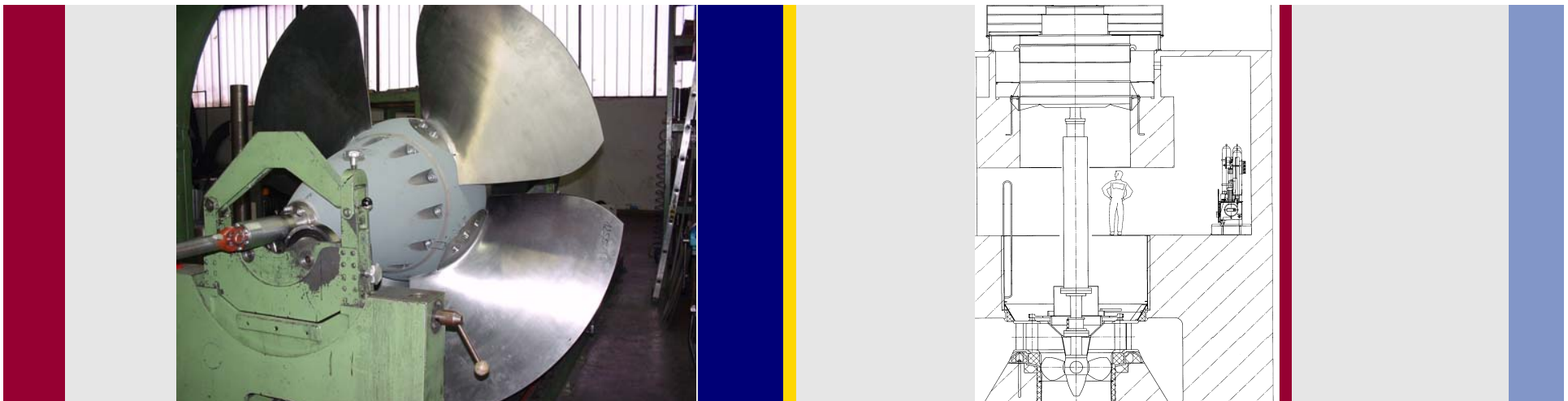
UNA

SCOPE OF SUPPLY:

Turbines
Electric governor
Hydraulic governor
Erection and commissioning

MAIN DATA:

Type: 4 x VK-18.0/SK4
Output: 4 x 2350 kW
Head: 12.0 m
Speed: 300 min⁻¹
Year: 1999
Country: Bosnia-Herzegovina



FURTMÜLLER

SCOPE OF SUPPLY:

Reparation
Automatisation
Modification of cogwheel to gear

MAIN DATA:

Type: Francis flume turbine
vertical
Output: 102 kW
Head: 3.37 m
Speed: 71 min⁻¹
Year: 1998
Country: Austria

